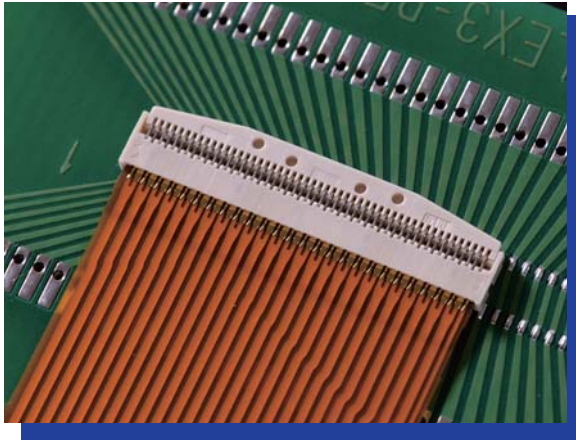


MINIFLEX 3-BFN

0.3mm Pitch

Horizontal Type
Narrow Type Back Lock
Connector



- Profile Height : 0.9mm
- Depth : 3.0mm* (with actuator closed) Narrow Type
The base projected area is reduced 45% (compared with MINIFLEX3-BF)
- Higher reliability structure
- Enhanced temporary hold mechanism by LIF structure
- Prevention of half lock by the unique actuator design
- Applicable for 0.2mm FPC thickness
Smooth operation for FPC insertion

*Depth of Long actuator type (20538) : 3.5mm

【Number of Positions】

13p, 15p, 17p, 19p, 21p, 23p,
25p, 27p, 29p, 31p, 33p, 35p,
37p, 39p, 41p, 45p, 49p, 51p,
55p, 57p, 61p

【Applicable Thickness of FPC】

FPC Thickness	0.2 ±0.03mm
---------------	-------------

【Ordering Code】

20527- 0 ** E - 01
① ③

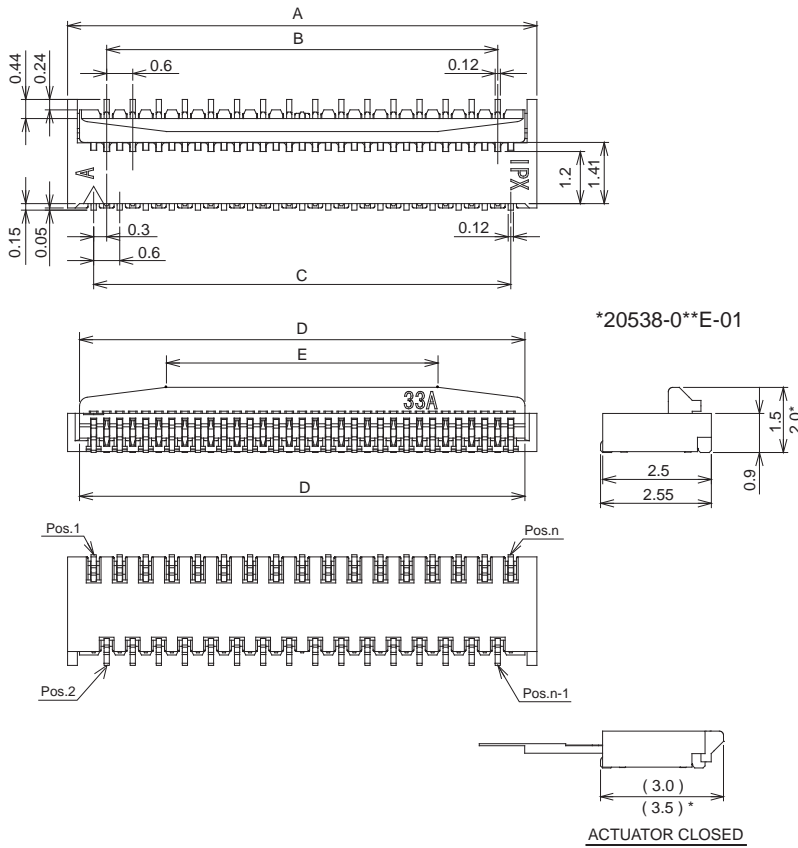
Long actuator type

20538- 0 ** E - 01
② ③

①	20527 POS.	13: 13pos 15: 15pos 17: 17pos 19: 19pos 21: 21pos 23: 23pos 25: 25pos 27: 27pos 29: 29pos 31: 31pos 33: 33pos 35: 35pos 37: 37pos 39: 39pos 41: 41pos	
②	20538 POS.	33: 33pos 35: 35pos 39: 39pos 41: 41pos 45: 45pos 49: 49pos 51: 51pos 55: 55pos 57: 57pos 61: 61pos	
③	Packaging	E	Emboss Tape

【Material / Finish】

Parts	Material	Plating / Color
HOUSING	LCP UL94V-0	NATURAL
ACTUATOR	LCP UL94V-0	NATURAL
CONTACT A	COPPER ALLOY	Au
CONTACT B	COPPER ALLOY	Au (with Ni stripe)



20527-0**E-01

POS.	A	B	C	D	E	F
13p	4.8	3.0	3.6	4.25	2.25	4.20
15p	5.4	3.6	4.2	4.85	2.85	4.80
17p	6.0	4.2	4.8	5.45	3.45	5.40
19p	6.6	4.8	5.4	6.05	4.05	6.00
21p	7.2	5.4	6.0	6.65	2.65	6.60
23p	7.8	6.0	6.6	7.25	3.25	7.20
25p	8.4	6.6	7.2	7.85	3.85	7.80
27p	9.0	7.2	7.8	8.45	4.45	8.40
29p	9.6	7.8	8.4	9.05	5.05	9.00
31p	10.2	8.4	9.0	9.65	5.65	9.60
33p	10.8	9.0	9.6	10.25	6.25	10.20
35p	11.4	9.6	10.2	10.85	6.85	10.80
37p	12.0	10.2	10.8	11.45	7.45	11.40
39p	12.6	10.8	11.4	12.05	8.05	12.00
41p	13.2	11.4	12.0	12.65	6.65	12.60

20538-0**E-01

POS.	A	B	C	D	E	F
33p	10.8	9.0	9.6	10.25	6.25	10.20
35p	11.4	9.6	10.2	10.85	6.85	10.80
39p	12.6	10.8	11.4	12.05	8.05	12.00
41p	13.2	11.4	12.0	12.65	4.65	12.60
45p	14.4	12.6	13.2	13.85	5.85	13.80
49p	15.6	13.8	14.4	15.05	7.05	15.00
51p	16.2	14.4	15.0	15.65	7.65	15.60
55p	17.4	15.6	16.2	16.85	8.85	16.80
57p	18.0	16.2	16.8	17.45	9.45	17.40
61p	19.2	17.4	18.0	18.65	10.65	18.60

